

Coffey Time

Vol. 9, Issue 2d

February, 2012

Page 1 of 4

Coffey Time is written by the first of each month. Updates and new paintings are posted during the month at www.coffeycreations.com. Just click "News". If Joan is a participant in an event, that fact will be mentioned, and her artworks will be mentioned and/or shown.

Updates

Update #1: **RCAA: New exhibits and no Art Views on Feb. 14**

RCAA 3870 Lemon St, 951-682-6737, www.rcaart.org

Mark Schooley, Director. Hours: Tues - Sat, 11 am -2 pm; or by appointment, ArtsWalk on First Thursdays, 6 to 9pm

Feb 16-Mar 17, 2012, Reception: Mar 1 Arts Walk, 6pm-9pm.

"**New Visions RCAA Members Exhibit** - This is an exciting, eclectic display of artwork. Joan helped hang the show and was thrilled to see it. She submitted two plein air paintings of Newport's Back Bay: "View from the Upper Bay" (9x12, \$300 framed) and "Newport Back Bay" (8x10, \$275 framed).



Artist Spotlight: "Assemblage – Works by Harriet Singer".

Young Artist Gallery: "Artworks by Regional Youth from HeArt Enterprises Art Masters Program.

Update #2: Joan will join the **Plein Air Artists of Riverside** during their annual **Paint Out Week**. Although the event begins Feb. 18 in Downtown Riverside, Joan will join them starting the 24th. Be sure to see the **Quick Draw Competition on Feb. 25, 9am-11:30am** at RAM. Participants will have only 2-1/2 hours to paint! Awards will be at 1:30pm. Noted painter **Mark Kerckhoff** is the juror.

Update #3: Another of Joan's new paintings: "Sunny Morning, Upper Bay" (8x10, \$250).



Update #4: "World of Watercolor"

Fallbrook Art Center, 103 S. Main Ave., Fallbrook, CA 92028, 760-728-1414. <http://www.fallbrookartcenter.org/>

In the Janice Griffiths Gallery, Feb 5 - Mar 18, 2012; Free to Members, Active Military, & Under 18; Admission \$5. This is the

only venue in the U.S. to have the honor of exhibiting both the **American Watercolor Society's Travel Exhibition** and the **National Watercolor Society's Travel Exhibition** at the same time. Also presented is the **3rd annual Signature American Watercolor Exhibition**, a unique show created by FAC featuring works by Signature Members of U.S. watercolor societies, juried by noted Arizona watercolorist **Ted Nuttall, AWS, NWS**.

Update #5: "Out of Africa"

CCA Museum of Art, in North Wing of the Joseph Filippi Winery, 12467 Baseline Rd, Rancho Cucamonga, CA 91739. Fri-Sun: noon-5pm. 909-463-3733; www.ccaamuseum.org/

Feb 3 – Mar 18, 2012. Reception Feb. 19, 2-4:30pm. Works by painter Joseph Pitruzzello and photographers Gilbert and Kelly Vela.

Riverside Arts Walk on First Thursdays—Feb. 2, 6pm –9pm

See visual and performing arts events at over 20 locations—including **RAM, RCAA** and **Div 9**. Stores and restaurants will be open, some with discounts. Get the map at RCAA or RAM.

The following gives info on some of the ArtsWalk activities. *For more on the Arts Walk and also for the Arts Walk Logo Redesign Contest:* www.RiversideCulturalConsortium.org

Riverside Art Museum (RAM) 3425 Mission Inn Av, 951-684-7111 Mon-Sat., 10am-4pm, Thu., 10am-8pm Admission: \$5; Students with I.D.: \$2; Seniors (65+): \$2, Children under 12: Free, Members: Free. www.riversideartmuseum.org

Jan 12-Mar 28, 2012--ERETAI: John Beech, Lael Marshall, David Rabinowitch, Michael Voss. ERETAI – meaning "rowers" in ancient Greek – comprises the work of four New York-based contemporary artists. Originally hailing from Canada (David Rabinowitch), the United Kingdom (John Beech), Brazil (Michael Voss), as well as the United States (Lael Marshall), all four artists present work that emphasize form, space, and intuitive process.

Jan 5-Mar 26, 2012--IN-PRINT: Five Centuries of Prints and Multiples from the Riverside Art Museum

Jan 5-Apr 5, 2012--Julie Torres / CLOSE ENCOUNTERS, works on paper by Brooklyn-based contemporary artist Julie Torres.

Jan 7 - Apr 7, 2012--PNET Exhibit 2012: The Printmakers Network (PNET) have put together a beautiful show of new prints by Sioux Bally-Maloof, Kathryn V. Crabbe Adeola Davies-Aiyeloja, Mary Grinyer, Jan Harvey, Jill Jones, Veronica Lucas, Sue Mitchell, Sue Simonin, Sarah Smith, and Sharon Zorn-Katz.

Winter 201 -Spring 2012--New Work by Paulden Exhibition Paulden Evans's new iron sculpture installation, featured on the RAM sculpture pad, reflects the playful, yet labor-intensive spirit that permeates the artist's work.

RAM's website is loaded with info, like group links (like for **Plein Air Artists of Riverside**) and for artists' artist links, like Joan's. <http://www.riversideartmuseum.org/artist-members/>

RAM's gift shop has many creative gifts, including some of Joan's cards and three of her paintings: "Peace Tower and Friendship

Coffey Time

Vol. 9, Issue 2d

February, 2012

Page 2 of 4

Bridge" (framed, \$125), "Asistencia Late Afternoon" (framed, \$275, 2nd Pl in Corona Art Associations 2011 "Spring Fling" exhibition) and "POW/MIA Memorial" (framed, \$275), plein air oil depicts a scene in Riverside National Cemetery.



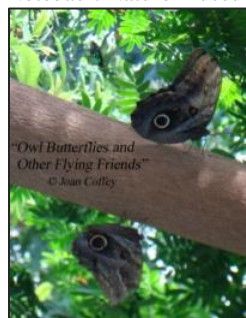
RCAA 3870 Lemon St, 951-682-6737, www.rcaaart.org

Mark Schooley, Director. Hours: Tues - Sat, 11 am -2 pm; or by appointment, ArtsWalk on First Thursdays, 6 to 9pm

Jan. 12-Feb 11: RCAA Members Photography Exhibit

Be sure to see this exciting exhibit, which includes photos by noted local photographers, like **Michael J. Elderman**, **Michael Mazgai**, **Carla Bender** and more, as well as by local artists, who work primarily in media other than photography. For example, **RCAA President Roy Dietrich** submitted a photograph of "Aurea Vista Side Walk". See if you can figure out what the subject is.

Joan submitted "Owl Butterflies and Other Flying Friends", taken during her recent trip to the Judy Istock Butterfly Haven in the Peggy Notebaert Nature Museum in Chicago's Lincoln Park.



Artist Spotlight: "Works by Cheryl Davis". This is an excellent exhibit, clean and crisp.

Young Artist Gallery: "Youth Arts Month Exhibit 2012"—A special exhibit of artworks by young artists from regional schools, coordinated by California Art Educators Association.

Feb 16-Mar 17, 2012: "New Visions RCAA Members Exhibit

See Updates on page 1.

Mar 22—Apr 21, 2012: "Imagining the Future of Reading" and "Words into Image: An exhibit by the Printmakers Network". RCAA has many gifts for sale, like jewelry by **Alexandra Beatty** & more.

Joan always has greeting cards in the racks. She also has six plein air oil paintings of Riverside scenes on canvas boards for sale in a portfolio at **RCAA:** the Benedict "Castle Bridge", "Victoria Avenue Walkway", "Victoria Avenue, Late Afternoon", "Rose Garden in Bloom", "Yellow and Purple Blossoms" in Fairmount Park, and "Convention Center Flags".



Division 9 (next to RCAA), www.division9gallery.com, 951-965-4392. Tu-F: 11-7; Sa: 11-2. Dir. Cosme Cordova, cosmeart@hotmail.com.

Jan. 27-Feb. 17, 2012: See "Fire Season" by talented and trained Teodor M. Dumitrescu, "Patron Collective VOL 4" plus works by other artists including **Michael J. Elderman's** photos (www.mjeldermanphoto.com). **People's Gallery** with **Marion Semic's** gallery is upstairs at 3643 University.

Life Arts Ctr, 3485 University, has **Pat Sablak's** and other artists' galleries. **People's Gallery** with **Marion Semic's** gallery is upstairs at 3643 University.

UCR ARTSblock on Main St., between University and Ninth

- Culver Center for the Arts, www.chass.ucr.edu/about/arts/culver.html
- UCR California Museum of Photography, 3824 Main St., 951-784-3686, www.cmp.ucr.edu
- UCR Sweeney Art Gallery, 3800 Main St., 951.827.3755, www.sweeney.ucr.edu

End of Riverside Arts Walk

Coffey Time

Vol. 9, Issue 2d

February, 2012

Page 3 of 4

New paintings



The **Plein Air Artists of Riverside** (PAAR, affiliated with RAM) scheduled the Asistencia (California Historical Landmark #42, 26930 Barton Road, Redlands, 909-793-5402) as a painting location in January. The Asistencia's bell tower is one of Joan's favorite painting subjects. Joan painted with many PAAR artists on Jan. 14. It was a cloudy day, and PAAR photographer Alan Scaccia took a photo of Joan painting. She is holding onto a mall stick which is used to keep the painting hand steady.



When Joan returned to finish her painting, the weather was sunny, so she began a second painting of the bell tower. Terry d. Chacon took a photograph of Joan painting. Joan returned to the Asistencia a few more times and continued work on her paintings, selecting which painting to work on depending on if it was sunny or cloudy.

Special Offer of the Month:

"Colorful Winter Day" (acrylic, 5x7 unframed), reduced 20%, from \$100 to \$80 and "Snowy Scene" (oil, 5x7 unframed) reduced from \$125 to \$100, \$350.



These two make a pretty set, and if both are purchased the total reduction is 25% (\$225 reduced to \$168.75).

Like nearly all of Joan's paintings, these are standard painting sizes and very easy to find frames for.

Galleries in or near Riverside with works by other artists

Riverside Arts Project (RAP) 3545 Central Ave, Suite 508, Riverside, CA 92506 (at Riverside Plaza between Chico's and El Torito's). Please call 951.680.1345 to schedule a gallery visit.

Free admission. www.theriversideartsproject.com

Feb. 1-Feb. 29, 2012: "Faces and Places" –New work (and a few familiar favorites) by Chick Curtis. Reception Fri, Feb. 10, 6-9pm.

Walter's Mercedes Benz, 3213 Adams St. Riverside, CA 92504

RAM is sponsoring 10 paintings by **Joanna Mersereau, AWS**, in the small showroom until April 15.

Riverside County Administrative Center--4080 Lemon Street, Riverside, CA 92501, (951) 680-1345; M-Th, 9 to 5

ArtScape is an excellent, ongoing exhibition.

Riverside City College Quad Gallery: 4800 Magnolia Ave., 951-222-8358. M-Th 1pm-3pm, thurs evenings 5-7:30pm
<http://academic.rcc.edu/art/exhibitions.jsp>

Nov 28- Dec 9, 2011, Feb 13-Apr 6, 2012: Pokrasso & Colleagues.

Galleries outside Riverside with works by other artists

The Irvine Museum, 18881 Von Karman, Irvine, CA. 949-476-2565, Tue-Sat, 11-5. www.irvinemuseum.org

Nov. 12, 2011-Mar 8, 2012: "Gardens and Grandeur: Porcelains & Paintings by Franz A. Bischoff". Be sure to see any exhibit in this museum.

Roger's Gardens, 2301 San Joaquin Hills Rd. Corona Del Mar, CA 92625. 949-640-5800, Open Daily 9am-6pm
www.rogersgardens.com.

Jan 7-Mar 11: "Visual Harmonies". Guest Artists **Carolyn Hesse-Low & Laurie Kersey**. Featured Artists **Daniel Aldana, Brian Blood, David Damm, Gil Dellinger, Robin Hall, Joe Paquet, W. Jason Situ**.

Hemet Valley Art Assoc., 2115 E. Florida Ave., Ste. D, Hemet, CA 92544. 951-652-4592. Hours: Mon-Sat: 10am-4pm.
<http://local.yahoo.com/info-45228312-hemet-valley-art-association-gallery-hemet>

Fallbrook Brandon Gallery, 105 N Main St, Fallbrook, CA 92028; 760-723-1330, Tu-Sat: 10am-4pm; Su: 11am-4pm
Noreen Ring, director (www.houseonahilldesigns.com)

Purchase art supplies at the **Brandon Gallery's ART SUPPLIES SHOP**.

Schroeder Studio Gallery, 112 E. Maple Ave, Orange, CA 92866
www.schroederstudio.com. Hrs: Tu-Th: 10:30am-5:30pm, F: 10:30am-7pm, Sa: 10:30am-4pm; Su: noon - 4pm.

Coffey Time

Vol. 9, Issue 2d

February, 2012

Page 4 of 4

Galleries outside Riverside with works by other artists (cont)

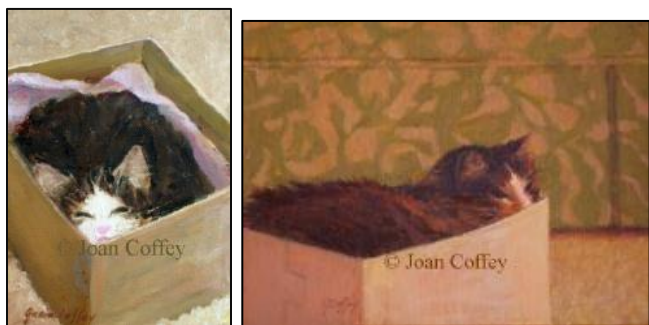
Joan and Jerry recently saw a painting demonstration by **Calvin Liang** (<http://calvinliangfineart.com>) at the gallery of another notable painter, **Debra Huse** (www.debrahusegallery.com), whose Gallery Director is also a painter: **Linda Johnson** (www.Lindajohnsonfineart.com).

Earlier that day Joan visited the excellent Franz Bishoff exhibition at **The Irvine Museum** (see page 3), where she happened to run into PAAR artists Pat Corbin Chao and Hellen Frances. Since it was thursday, there was a free docent tour. The tour guide was noted painter Carole Boller, www.bollerart.com.

Riverside artist **Sue Noon** has work in a Honolulu show, "Advance 3 Steps to the Arts", thru March 4, 2012. A percentage of sales supports **Hawaii Gifted Association**. She also has paintings in **RAM's** gift shop and in the **Redlands Art Association** gallery.



Pet Portraits are part of Joan's product line. She will work from a photo that you have taken or, if you are local, one that she takes of your pet: **8 x 10:** \$250, **9 x 12:** \$275, **11 x 14:** \$350. Prices are for one subject (additional pets \$75 each), unframed. Prices do not include shipping. Ask about other sizes. Special pet toy or other item added for no extra charge. There is an extra charge for complex backgrounds. Allow 6-8 weeks for delivery of final painting.



More new painting: Here are a few studio studies that Joan painted from some of her own photographs.



Cyber World: See www.coffeycreations.com to view and purchase Joan's art and read her news. Sites of two of the **California Art Club** Artists whose workshops Joan has taken: **Frank Serrano** (www.pleinairgallery.com) and **Robin Hall** (www.robinhall.com).

Inland Empire sites: www.InlandArts.com for art happenings in the IE, Michael Mazgai (<http://mjmazgai.weebly.com/>), r. mike nichols (<http://mnico.weebly.com/>), Jesus Cruz (<http://cruzprints.com/>), Karen Kauffman (www.karenkauffman.com). John Dingler (johndinglerart.weebly.com).

Interested in quilting? See www.quiltfabric.com, where you can order a "How to Make Your First Quilt" dvd created by Joan's longtime friend, **Karen Oliver**, and **Chris Sass**, the Quilt Fabric store owner. **Karen's** website is now up. This award-winning quilt maker can make a memory quilt out of T-shirts: www.koquilts.com. See **Green Sky** eco-boutique www.greenskycompany.com, Nadeen Kieren, Shopkeeper, 5357 N. Ashland).

Happy Valentine's Day!

